

If you would like to learn more about this study, please contact the study coordinators:

Northwestern University

Jonathan Parker
jtp@northwestern.edu
Annie Eliopoulos
annie.elopoulos@nm.org

Cedars-Sinai Medical Center

Victoria Amran
Victoria.Amran@cshs.org

University of Colorado

Samantha Hopp
SAMANTHA.HOPP@CUANSCHUTZ.EDU

Duke University

Taylor Hayes
taylor.hayes@duke.edu

University of North Carolina

Melisa Ramirez-Pineda
melisa_ramirez-pineda@med.unc.edu



Northwestern University



CEDARS-SINAI

SAMUEL OSCHIN
CANCER CENTER



University of Colorado
Anschutz Medical Campus



DUKE UNIVERSITY
HEALTH SYSTEM



UNC

SCHOOL OF
MEDICINE



NATIONAL
CANCER
INSTITUTE

NWU20-02-01

**Do you have
endometrial
intraepithelial
neoplasia (EIN)/
complex atypical
hyperplasia (CAH)?**

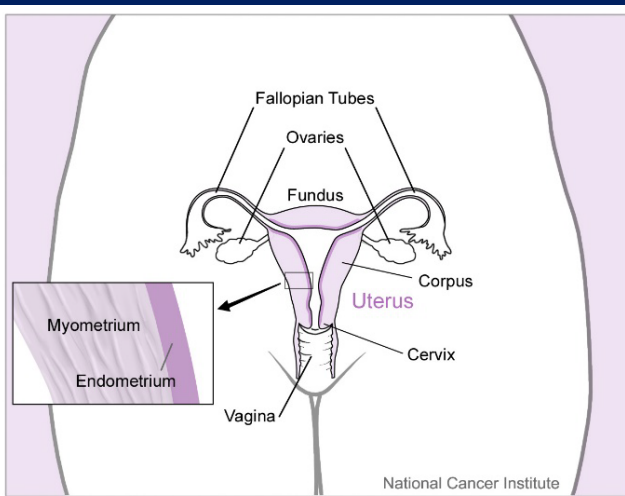
Join

**A Study on
Endometrial/Uterine
Cancer Prevention**



Advances in cancer prevention rely on people at risk for cancer, who participate in them.

Will you join us in the pursuit to prevent cancer?



Why Is This Study Being Done?

- Patients with EIN have an increased risk of developing uterine/endometrial cancer.
- Better ways to prevent uterine/endometrial cancer are needed.
- This study is designed to look at the impact of megestrol acetate alone, or combined with metformin, on the cells of the uterine lining that lead to the growth of EIN.
- Research suggests that metformin may have anti-cancer properties.
- If successful, this study will help us develop a new option for uterine/endometrial cancer prevention.

What Are the Study Groups?

- Group 1: Will get a study drug called megestrol acetate. Megestrol acetate is a synthetic version of the human hormone progesterone. It treats breast cancer and endometrial cancer by affecting female hormones involved in cancer growth and is approved by the FDA for treatment of EIN.
- Group 2: Will get two study drugs - megestrol acetate and metformin. Metformin is approved by the FDA for treatment of diabetes, but not for treatment of EIN.



You may be eligible if you:

- Have EIN/CAH and are planning a hysterectomy
- Are over the age of 18
- Are not currently pregnant or trying to become pregnant

If you take part in this study, you will be asked to do the following:

- Take one or two pills by mouth twice a day for 3-5 weeks
- Keep a pill diary
- Attend study appointments
- Donate blood samples and complete a physical exam
- Complete your planned hysterectomy

